

## Torayvino's filter media

There are various types of filter media applied in water purifiers: activated carbon, hollow fiber membrane, reverse-osmosis (RO) membrane and UV sterilizer. Hollow fibers and RO membrane are used to remove red rust, turbidity, microscopic dirt like bacteria and coliform bacilli to make water clear, but RO membrane also removes minerals dissolved in water. UV sterilizer works by electricity and needs an electric cord, so the places where the UV sterilizer can be installed are limited. To remove turbidity and smell which cause bad taste of water while leaving important minerals for health, the best filter media for water purifiers are "activated carbon + hollow fiber membrane" applied in "Torayvino".

Removal object	Filter media			
	Activated carbon	Activated carbon + Hollow fiber membrane	Activated carbon + RO membrane	Activated carbon + UV sterilizer
Residual chlorine & Chlorine odor	Effective	Effective	Effective	Effective
Red rust, turbidity	No effect	Very effective	Very effective	No effect
Bacteria, Coliform bacilli	No effect	Very effective	Very effective	Very effective
Minerals in water	As it is	As it is	Remove	As it is
Electricity	Unnecessary	Unnecessary	Necessary	Necessary
Certainty of turbidity + bacteria removal	No effect	Very effective	Very effective	Up to power supply
Recommendation	☆	☆☆☆	☆☆	☆

It is really easy to install Torayvino on the faucet, just use the attached adapters included. You don't need any special plumbing or tools.

**Fits almost any faucets with the following adapters.**

Adapter	Fastening ring 16mm, 17.5mm, 19mm	Aerator adapter With attachment tool	Inner thread aerator adapter With attachment tool	Screw fastener
Faucet	Round spout with rim	Screw-on type removable aerator nozzle with cap (Screw diameter: 22mm)	Interior thread aerator cap	Round spout with no rim Diameter: 13mm - 24mm
Spout shape	① ② ③ ④	⑤ ⑥ ⑦ ⑧	⑨ ⑩ Grohe etc.	⑪

**CAUTION**  
 • Leaks resulting from breakage of spout or spout parts are not covered by our guarantee.  
 • When a plastic insulation cap is attached to the end of the spout, water may leak from the faucet or the water purifier may not fit the faucet or the insulation cap may be broken, depending on the faucet type and condition.

**⚠ Faucets shown below will not accept the unit.**

<input checked="" type="checkbox"/> Vertical section of spout less than 15 mm in length Less than 15 mm	<input checked="" type="checkbox"/> Shower nozzles	<input checked="" type="checkbox"/> Spout diameter more than 25mm 25 mm or more
<input checked="" type="checkbox"/> Non-standard spout head Square Oval	<input checked="" type="checkbox"/> Screw threads more or less than 22mm in width More or less than 22 mm	<input checked="" type="checkbox"/> Spouts with sensors

External dimensions : 90.5mm (H) x129mm (W) x 56mm (D) Weight (filled to capacity) : 250g

Model	MK2-EG
Casing material	ABS resin
Filter materials	Granular activated carbon, polysulfone hollow fiber membrane
Initial filtration flow rate	2.0 liters per minute @100kPa
Minimum working water pressure	70kPa
Filtration capacity	-Free residual chlorine: total filtration volume 1500 liters, rejection rate 80%, Japanese Industrial Standards (JIS) S3201 test results -Turbidity: total filtration volume 2000 liters, filtration flow rate 50%, JIS S3201 test results
Accessories	Standard type cartridge (1 pc), instructions for use (1 copy), adapter set (1 set)
Recommended cartridge use duration	About 3 months if 15L are used per day (It varies with use volume, water quality and water pressure.)
Safety precautions	-Please use water which meets drinking water quality standards only. -Do not run water of over 35°C through the filter cartridge. -Do not run water of over 50°C through the unit under any conditions. -Do not store the filtered water! -First thing each morning, run water through "Pure Water" for 10 seconds before using or drinking. If unused for 2 days or more, "Pure Water" for 60 seconds before drinking or using. -Do not let water freeze in the unit! -Do not use the filtered water in fish bowls or aquariums. -If attached to a faucet used for both hot and cold water, users may experience difficulties in water heater ignition. -The unit is designed to withstand water pressure of up to 350kPa. -When attaching or removing a filter cartridge, turn off your faucet and set the water selection lever to "Unfiltered Straight" or "Unfiltered Spray". -Be sure to read the enclosed instructions for use carefully before use.
Manufactured by	Toray Industries, Inc. Torayvino Dept. 8-1, Mihama 1-chome, Urayasu, Chiba 279-8555, Japan <a href="http://www.torayvino.com/e/product">http://www.torayvino.com/e/product</a>

Distributor

**TORAY**  
Toray Industries, Inc.

# torayvino MK2

Compact faucet mount type

## "Hollow Fiber Membrane Filter" Water Purifier



Model :  
MK2-EG

**MADE IN JAPAN**

Reliable brand of household water purifier produced by **TORAY**, Japan's leading state-of-the-art materials company.

# torayvino

Enjoy pure, clear, tasty water from Torayvino at home.  
Compact, user-friendly design supports your daily life.

### Torayvino's membrane technology

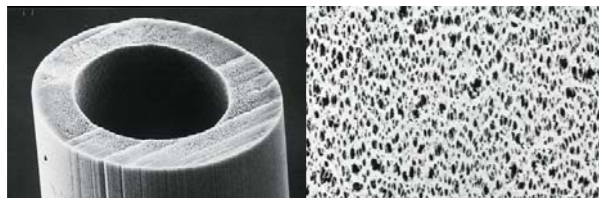
In 1968, Toray started research of water treatment membranes and we developed technologies of many types of membrane in order to separate various sizes of impurities for a comfortable water environment. Toray is now one of the leading companies in the world. The hollow fiber membrane applied in the Torayvino water purifier was developed based on our medical technology used for artificial kidneys. The bacteria reduction performance test complies with the Japan Water Purifier Association (JWPA) Voluntary Standards for Water Purifiers. The water filter has been proven to remove 99.99% of the indicator bacterium specified in the standards.

# Using the double filtering system, TORAYVINO achieves excellence in water quality and taste.

## Various Functions

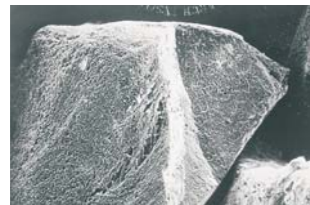
### Multilayer hollow fiber membrane filter

One of the state-of-the-art materials developed by Toray, hollow fiber membranes are now used in advanced medical fields. The “macaroni-shaped” fibers have more than 400 billion micropores measuring only in unit of 0.1 microns (1/10,000mm) across covering their surface. The multi-layered micropores securely capture microscopic contaminants such as turbidity, red rust, coli and other bacteria and cysts, leaving minerals essential to the human body as calcium or magnesium.



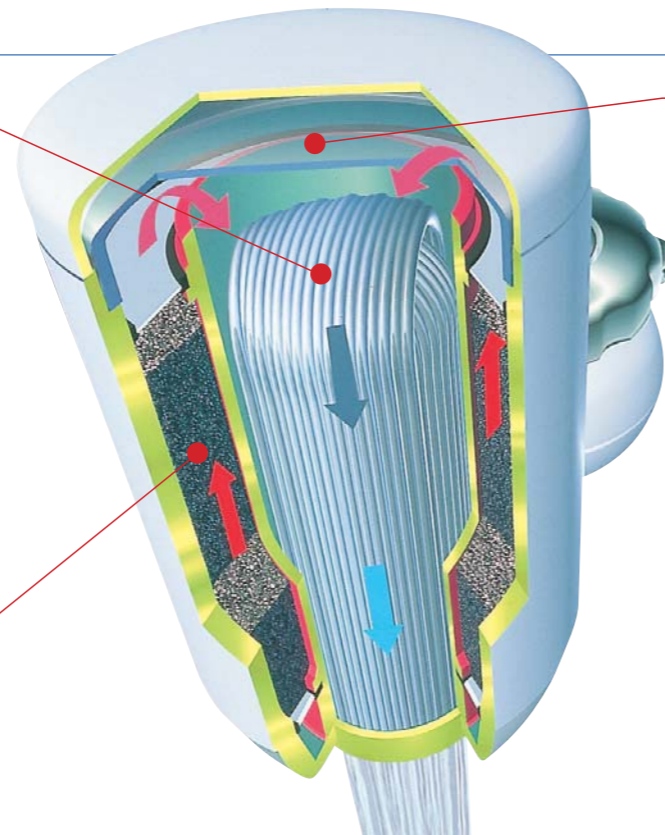
### Granular activated carbon

The Torayvino water purifier uses high-performance activated carbon in its filter. The granular activated carbon has a tremendous number of cracks and holes on the surface that absorb unpleasant smells of water; it removes the chlorine smell and residual chlorine to make tasty water.



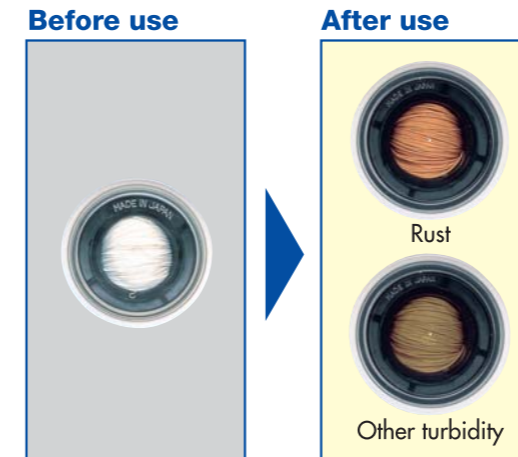
### “Compact Shape”

Torayvino has powerful water purification performance, but the design is very compact and doesn't block your view of your hands when using the sink.



### See-through Window

The transparent “See-through Window”, a feature unique to Torayvino, renders impurities trapped by the hollow fiber visible, and helps ensure cartridges are properly checked and replaced. The filtered water is therefore always safe and tasty.



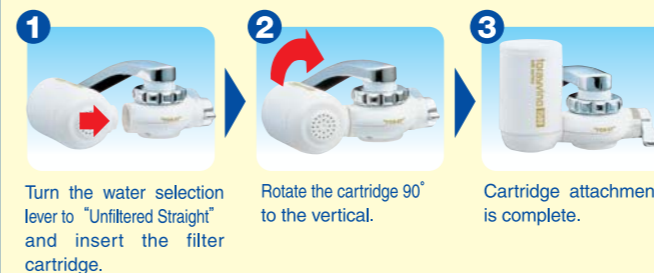
### Easy-to-use 3-step water selection lever

Just set the easy-to-use water selection lever to “Filtered Water”, “Unfiltered Straight” or “Unfiltered Spray” to obtain water that suits your needs. And since you can run up to 50°C water through “Unfiltered Straight” and “Unfiltered Spray”, that means no adjustment for dishwashing or other kitchen chores.



### Cartridge type for easy installation and replacement

Cartridge attachment / replacement is as easy as 1-2-3!



## Torayvino for daily use

You can use Torayvino water in various ways, other than for drinking. Tasty water improves your satisfaction with life.

### Tasty water

You will enjoy clear, odor-free tasty water by Torayvino.



### For tea and coffee

You can taste tea and coffee better without any chlorine or unpleasant smells.



### For cooking

The filtration flow rate is fully 2 liters per minute. You can use abundant water for cooking soon after opening the tap.



Use Torayvino MK series filter cartridges as replacement cartridges.

Model: MKC-EG

Contains 1 cartridge

Cartridge life is 1500L or about 3 months assuming 15L are used per day.